

# Information Package

## ASAA 4A Boys/Girls Volleyball Provincial Championships

November 22-24, 2018

Charles Spencer High School

Grande Prairie, AB



**On behalf of Charles Spencer High School, we welcome all participants to Grande Prairie.  
We hope that we will provide an enjoyable and successful event for all participants!**

### **Locations:**

Charles Spencer High School, #20 Knowledge Way, Grande Prairie, AB

Grande Prairie Regional College, 10726 106 Ave, Grande Prairie, AB

St. Joseph Catholic High School, 10520 68 Ave, Grande Prairie, AB

### **Tournament Contacts:**

Mat Snider - Tournament Co-Chair <a href="mailto:mat.snider@gppsd.ab.ca">mat.snider@gppsd.ab.ca</a> 780 513 3200 ext. 2809 (w)	Melanie Matheson - Tournament Co-Chair <a href="mailto:melanie.matheson@gppsd.ab.ca">melanie.matheson@gppsd.ab.ca</a> 780 513 3200 ext. 2802 (w) 587 297 0173 (c)
--	--

### **Tournament at a Glance**

#### **Monday, November 19**

Registration Deadline - online	Noon
Breakfast Tickets purchased - online	Noon

#### **Wednesday, November 21**

Practice Times (1 hour slots - CS, St Joes)	12:00 pm - 7:00 pm
Team Pictures(CS) (first come, first served)	12:00 pm - 7:00 pm
Coaches/Captains Meeting (CS)	7:00 pm

#### **Thursday, November 22**

Breakfast (Pomeroy)	9:00 am - 11:00 am
Opening Ceremonies (CS)	12:00 pm - 1:00 pm
Pool Play Begins (CS, St Joes, GPRC)	2:00 pm

#### **Friday, November 23**

Playoff Games Begin (CS, GPRC)	9:00 am
Quarter Finals (CS, GPRC)	5:00 pm and 7:00 pm

#### **Saturday, November 24**

Playoff Games Continue (CS, GPRC)	9:00 am
Medal Games (CS)	2:30 pm, 4:30 pm and 6:30 pm

## Website Address:

<http://provincials.asaa.ca>

## Host School Website:

[Charles Spencer High School](#)

## Results:

[2018 4A Provincial Volleyball Championships](#)

## Registration/Fees:

Tournament fees for the 4A Championships have been established by the ASAA at \$590.00/team. This fee is based solely on AVOA costs. Teams will register for the tournament through the official host website. **Please arrange payment with the CSHS Business Manager, Leanne Kwiatkowski, at 780 513 3200, ext. 2805. Preferred method of payment is VISA or debit.**

When registering for the tournament, teams are reminded that they must purchase breakfast tickets (\$27.00/person - maximum 20 tickets/team) and pay the Loonie fee (\$1.00/athlete).

Team registration must be completed by Monday, November 19 at 12:00 noon. Team fees must be paid prior to the start of the first game on Thursday, November 22.

## Breakfast/Official Opening:

The breakfast will be held on November 22 at 9:00 am at the Pomeroy Hotel and Conference Centre (11633-110 St. Grande Prairie - [Pomeroy Hotel and Conference Centre](#)). Tickets are \$27.00/person with a maximum of 20 tickets allowed per team. Tickets must be paid for at the time of registration. Teams are expected to dress in team gear. The banquet will include opening comments by ASAA executive members, guest speakers, and a buffet breakfast (including vegetarian options).

The official opening of the tournament will be held on Thursday, November 22 at 12:00 noon at the Charles Spencer High School gymnasium. Teams must wear team gear for the ceremonies.

Attendance at the breakfast/opening ceremonies is compulsory for all team members and coaches.

## Pay it Forward Loonie Fee:

Just a reminder to all schools that there will be a 'Pay It Forward Loonie Fee' assessed to all participants at provincials. This fee will be added to all provincial registration forms on the tournament website.

The Pay it Forward Loonie Fee – states that “each provincial championship will charge an additional \$1 for each participating student and remit those funds to the ASAA office after the championship. Those funds will be directed to the ASAA scholarship fund to recognize student athletes who give back to their school and communities by either coaching or officiating in school or community sport.”

### Photos:

All teams are expected to have team photos taken on Wednesday, November 21. Photos will be taken at Charles Spencer High School on the stage in the common area on a first come, first serve basis starting at 1:00 p.m. Pictures need to be completed by 6:30 pm. Teams are requested to appear for photos in their game jerseys.

### Warm-up Volleyball/Practice Sessions:

All teams are required to provide their own volleyballs for practice and warm-up.

For visiting teams, practice times will be accommodated in one-hour blocks on Wednesday, November 21, beginning at noon. The Charles Spencer and St. Joseph’s Catholic High School gyms will be used for practices. Teams may begin booking practice times online on Monday, November 21 at 9:00 a.m. There will be a link to the online form on the website at that time. If you have problems booking a practice time online please call Will Young at Charles Spencer at 780 513 3200, ext. 2818.

November 21	CS 1	CS 2	St Joes 1	St Joes 2
12:00 - 12:55				
1:00 - 1:55				
2:00 - 2:55				
3:00 - 3:55				
4:00 - 4:55				
5:00 - 5:55				
6:00 - 6:55				

### Coaches/Captains Meetings:

These will be held at Charles Spencer at 7:00 pm on Wednesday, November 21. All teams must have a representative present for each meeting.

## **Livestream:**

Games will be telecast on the ASAA YouTube channel. Links to the channel can be found on the championship website.

## **Gate Admission:**

Tournament Pas (3 day): \$ 20.00

Single Day Entry: \$ 10.00

Children 10 and Under: Free

## **First Aid:**

Teams must provide their own medical supplies and plan to do their own taping. Charles Spencer, St. Joseph's, and Octane Safety First Responders will be onsite to provide medical assessment and assist with treatment. Tournament Organizing Committee members will be available to assist you in accessing further medical attention if required.

## **Tournament Apparel:**

Elite Promotional Marketing is providing tournament apparel. Elite will not be printing/pressing on-site. Apparel will be on sale Wednesday (during practice sessions), Thursday, and Friday at Charles Spencer.

## **Hospitality/Concession:**

A concession will be open at Charles Spencer High School for the duration of the tournament. Food services will also be open at Grande Prairie Regional College for the duration of the tournament.

Hospitality rooms for coaches, referees, and organizers will be provided by the organizing committee at CSHS (Thursday-Saturday) in room 126 and GPRC (Thursday-Saturday) in room J203. Please ensure that coaches are not bringing their families into this location as it is provided for down time for coaches and officials between games.

## **Awards Presentations:**

All medal presentations will be presented immediately following the placement game. These include Championship, Finalists, 3rd Place, 4th Place, and Consolation Championship. In accordance with ASAA, Team Sportsmanship Awards will be presented by the ASAA to the recipient school at a time shortly after the competition.

## Sportsmanship:

Consistent with ASAA values, a strong emphasis on and recognition of sportsmanship in both individual and teams will be highlighted. The Sportsmanship Committee will award individual pins in recognition of sportsmanship-like actions through the tournament and will forward recommendation for the Team Award to the ASAA for later presentation.

The Sportsmanship Committee will be comprised of members of the organizing committee as well as a representative voice from the AVOA.

## Discipline and Misconduct:

Breaches of the ASAA Code of Ethics are treated seriously and, as hosts, we are required to immediately report to the ASAA office any breaches that come to our attention. A portion of the ASAA Code of Ethics states “Any conduct, including, but not limited to ejections, fighting, drugs and alcohol use, that results in dishonor to the athlete, the team, the school or the ASAA will not be tolerated” (pg. 29)

Coaches or players who are ejected from a game will be required to leave the venue (exit the building) for the duration of that match.

## Grievance/Discipline Committee:

A Grievance/Discipline Committee will be in place to review any and all concerns that may occur. These will include appeals of application of ASAA policy (e.g. automatic game suspension for ejection of an athlete or coach), as well as tournament concerns. This Committee will be comprised of two members of the host committee.

Contact information for immediate resolution will be presented at the Coaches’ Meeting.

## Code of Ethics/Sportsmanship:

We remind everyone about the standards of behavior and performance for which the ASAA stands and that these standards apply to athletes and team officials as well as supporters. Fair play and sportsmanship of all team members are expectations of the ASAA and the organizing committee and are the responsibility of coaches.

**A reminder that artificial noisemakers are not allowed at ASAA events.** While hosts will monitor and address unacceptable spectator behavior, we will – if necessary – call on team delegates to assist with their fans.

## Accommodation Information:

Blocks of rooms have been reserved at the following hotels. When calling, please ask to reserve rooms under the 4A Provincial Volleyball block booking. Teams are asked that they book rooms only for athletes, coaches, and team officials under these blocks.

Service Plus Inns and Suite (30 room - \$119/night plus tax)

**\*\*\*Please call first - parent company is an ASAA sponsor.**

**Cut-off date** to reserve rooms under this block is **November 19.**

10810 - 107 Ave, Grande Prairie

780-538-3900

Pomeroy Group Hotels (80 Doubles and 30 Kings)

**Cut-off date** to reserve rooms under this block is **November 20.**

Teams can call the properties below to book under this block or use the links provided to arrange bookings.

Pomeroy Inn and Conference Centre (\$139/night plus tax)

11633 - 100 St, Grande Prairie

780-532-5221

[Pomeroy Inn and Conference Centre](#)

Stonebridge Hotel (\$129/night plus tax)

12102 - 100 St, Grande Prairie, AB

780-539-5561

[Stonebridge Hotel](#)

## Parking:

### **Wednesday, November 21:**

Charles Spencer High School - buses and guests must park in CKC Overflow Parking (north of the CKC Field)

St Joseph's Catholic High School - buses can park in the staff parking lot (east of the school).  
Guests can park in the staff or student (south) parking lot

**Thursday, November 22**

Charles Spencer High School - buses and guests must park in the CKC Overflow Parking

St Joseph's Catholic High School - buses can park in the staff parking lot (east of the school).  
Guests can park in the staff or student (south) parking lot

Grande Prairie Regional College - prior to 4:30 pm - guests can park in Lot C (paid parking) or Lot D (by the ball diamonds). Buses should park in Lot D. After 4:30, guests are welcome to park in any of the lots.

**Friday, November 23**

Charles Spencer High School – all lots are available to buses and guests

Grande Prairie Regional College - prior to 4:30 pm - guests can park in Lot C (paid parking) or Lot D (by the ball diamonds). Buses should park in Lot D. After 4:30, guests are welcome to park in any of the lots.

**Saturday, November 24**

Charles Spencer High School - all lots are open to buses and guests

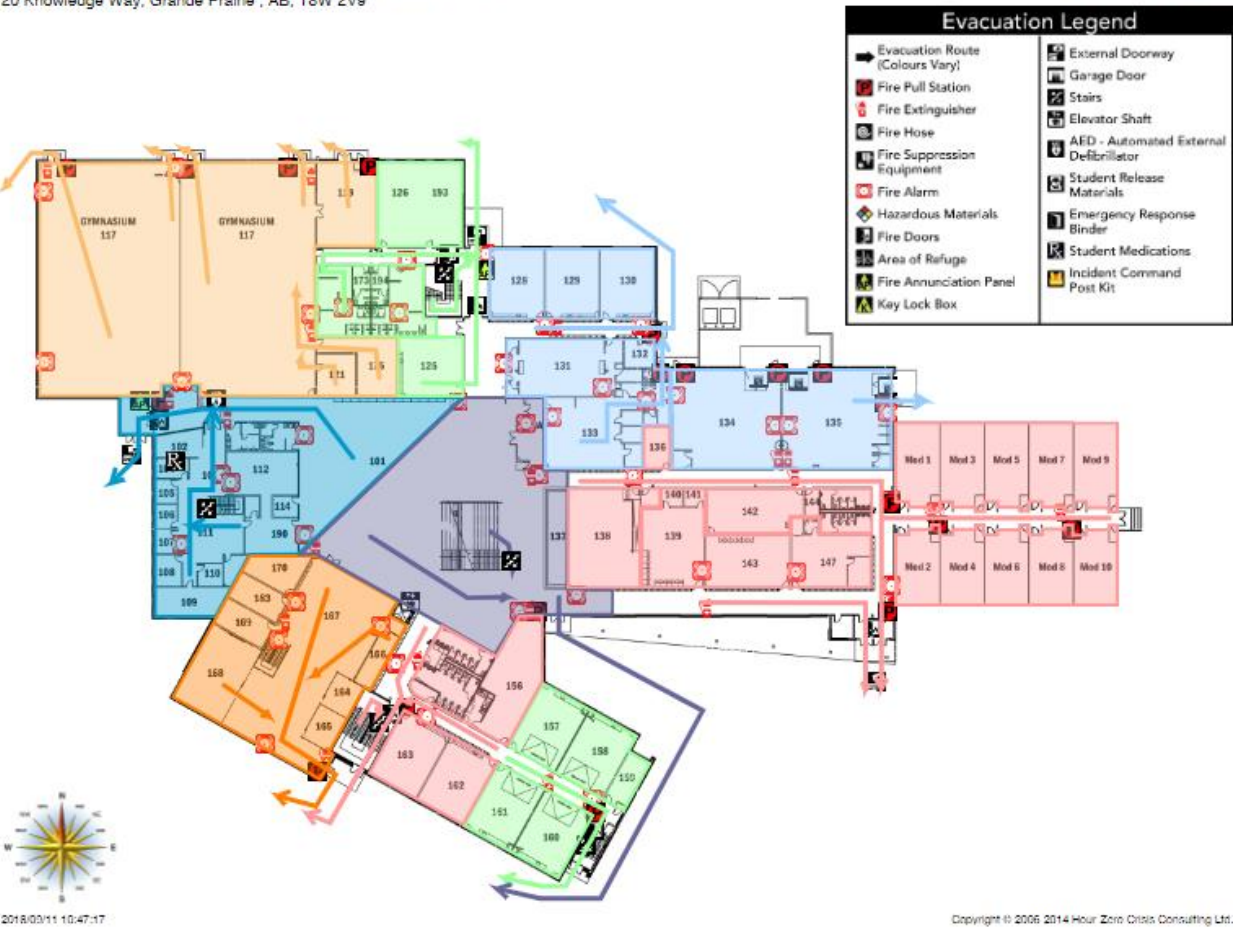
Grande Prairie Regional College - all lots are open to buses and guests



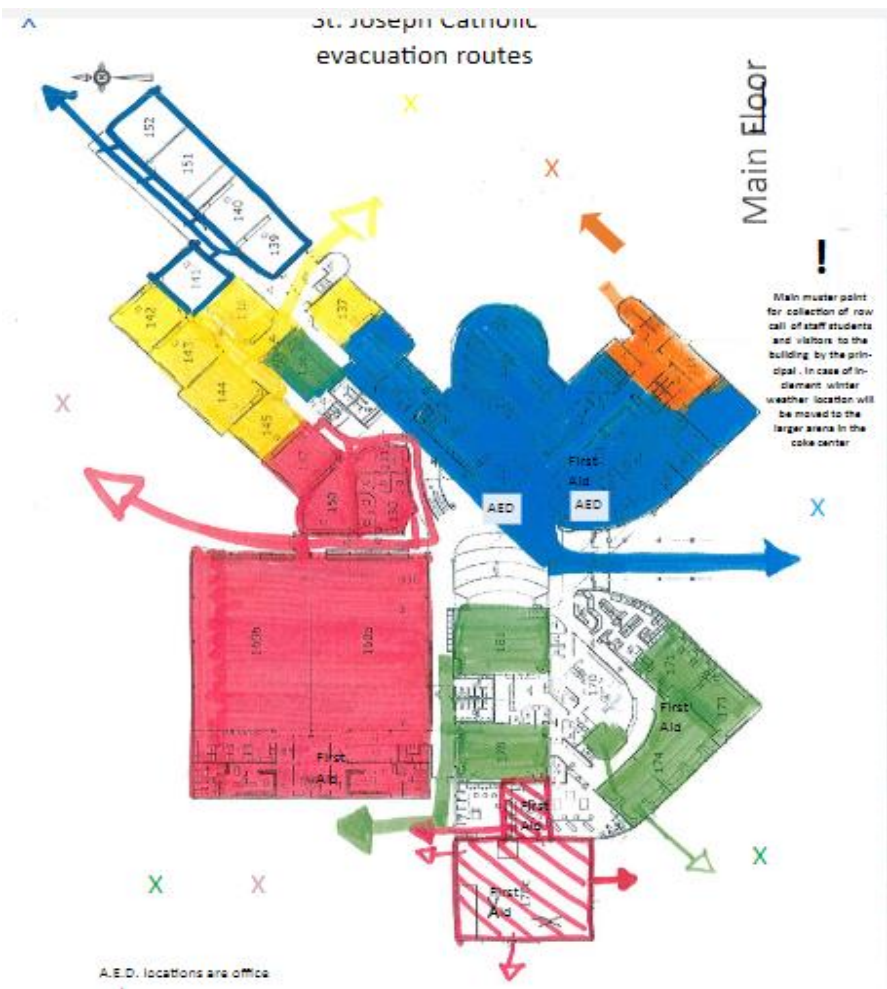
# Charles Spencer Evacuation Map

Charles Spencer High School – Charles Spencer 1st Floor Facility Map  
20 Knowledge Way, Grande Prairie, AB, T8W 2V9

Building Evacuation Summary



# St. Joseph's Catholic High School Evacuation Map



# Grande Prairie Regional College Evacuation Map

## Emergency Contacts:

Fire / RCMP / Ambulance

911

Campus Security

780-539-2700

GPRC Facility Services

780-539-2808

## Discovering fire / smoke conditions:

Remove those in immediate danger

Ensure to close doors and windows but keep unlocked, leave lights on

Activate the closest fire alarm pull station

Call 911 then Campus Security

Try to extinguish the fire if safe to do so

## If you hear the fire alarm:

- Shut down equipment and evacuate area
- Close doors and windows as you go but keep unlocked, leave lights on
- Exit building via nearest possible exit unless re-routed by an Evacuation Supervisor and proceed to Muster Point in parking lot
- If smoke is encountered, stay low to the ground

The incident is terminated when Emergency Services declare an "All Clear"

X Fire Pull Station  
• Fire Extinguisher  
HP Security Help  
Phone  
• First Aid Kit  
AED Defibrillator  
---> Egress Route

## GPRC K-Wing 100 Level

### Evacuation Map

10726-106 Ave

