

EMERGENCY ACTION PLAN - Gateway Christian School

Venue:

Gateway Christian School (403-346-5795)

Venue:

**Main Gymnasium
Small Gymnasium**

Location and Directions:

**4210 - 59 Street
Red Deer, AB T4N 2M9**

Ambulance Access:

(Main Gym) Through front doors located off 59 Street.

(Small Gym) Through the gym door located on the far, southeast side of the school off 59 Street.

Emergency Situations:

Emergencies include when an athlete is not breathing, has lost consciousness, and/or may have a serious neck, back, head injury, an open fracture/significant deformity, severe bleeding, etc.

Non Emergencies include minor injuries such as small cuts, bruises, sprains, strains, etc.

Emergency Protocol:

Call 911

Perform emergency first aid as needed
contact GCS staff, as they are best suited to help with ambulance access, and extra first aid supplies.
Have someone meet and guide the ambulance.

Non-Emergency Protocol:

First aid kits located across from staff washrooms.
Ice located in the staff room. Perform first aid as needed
contact GCS staff if help is needed.

EMS DISPATCH #:

PLEASE ENSURE THAT GCS STAFF ARE NOTIFIED OF ANY EMERGENCY.

LIFE THREATENING = 911

Non-Life Threatening = on-site GCS staff

Principal & her cell #:

Geannette Lehman, Principal (403-302-2938)

Emergency Equipment Available:

Ice packs, splints, wound care, basic first aid supplies
available in first aid kits located across from staff washrooms.

AED located in the Den close to the announcement screen on the southwest wall.

Obstacles That May Interfere:

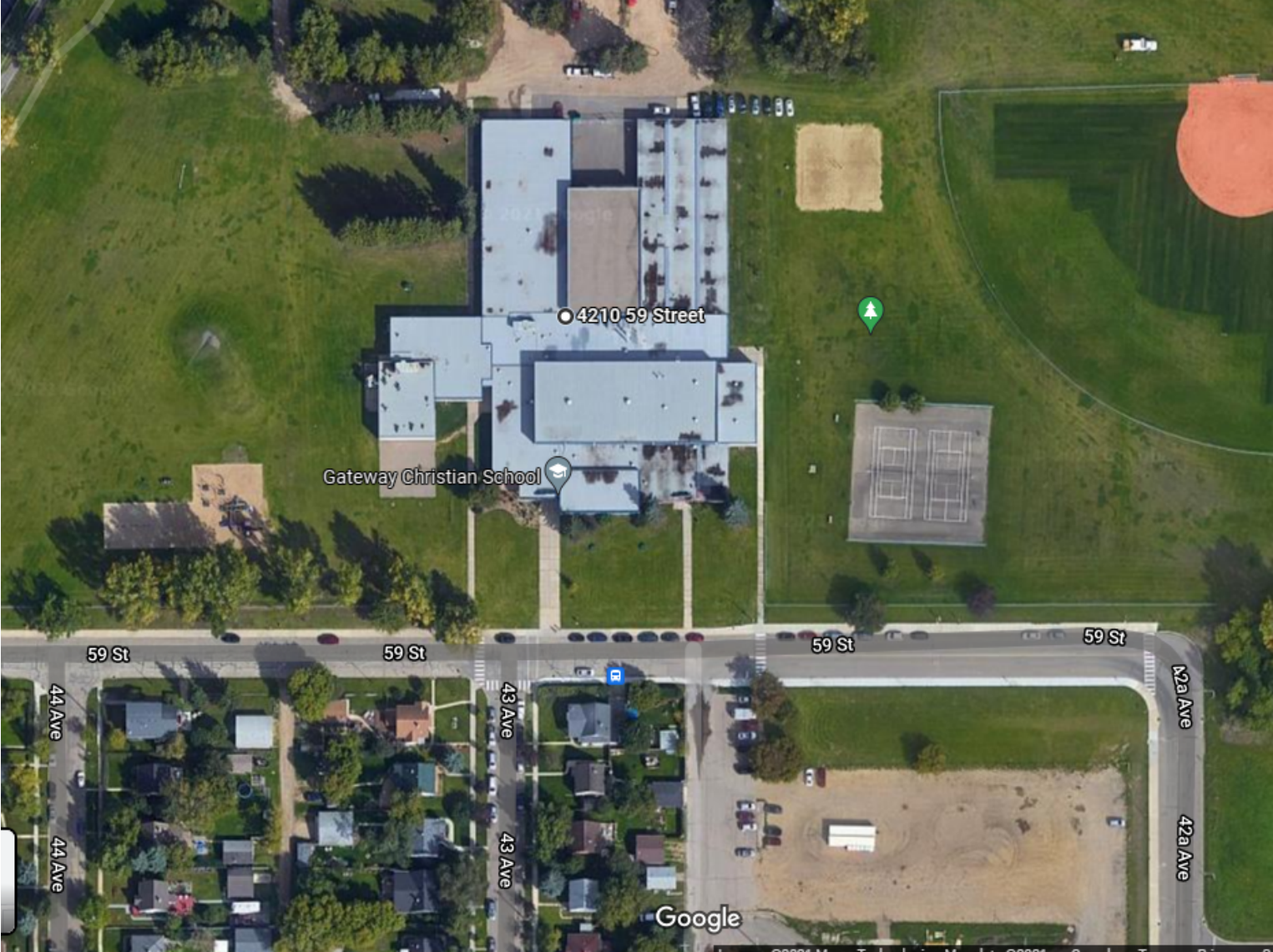
Parked Cars, Spectators, Athletes, bleachers

Location of Nearest Emergency Facility:

Red Deer Regional Hospital Centre
3942 50A Avenue, Red Deer, AB T4N 4E7 (403) 343-4422

Location of Nearest Medicentres:

Waskasoo Medical Clinic
4750 48 Avenue, Red Deer, AB T4N 3T1 (403-346-2057)
Discovery Walk-In & Medical Clinic
130, 3410 50 Ave. Red Deer, AB T4N 3Y4 (403-342-9444)
Village Mall Walk-In Clinic
6320 50 Avenue, Red Deer, AB (403-314-5357)



Procedure:

Everyone exits the building via designated route for your area OR closest exit.

Wait at the parking lot across from the front of the school (behind Festival Hall/RDPSD Facility Services) until an "All Clear" signal is given or further directions communicated from area.

Supervisor(s)

- In-case of inclement weather, announcement will be made by administration or by Supervisor(s) to proceed to **Alternate Emergency Location.
- Once outside, form an organized line or group behind Supervisor(s) and take attendance.
- Wait outside until the ALL CLEAR message is heard or other instructions are given.

