

EMERGENCY ACTION PLAN – Lindsay Thurber

VENUE: **Lindsay Thurber Comprehensive High School
(403-347-1171)**

Venue: **Main Gymnasium (North & South)
BAM Gymnasium**

Location and Directions: **4204-58 Street
Red Deer, AB**

Ambulance Access: (BAM GYM) Through front doors located off the bus lane that branches off 42a Avenue at the west end of the school.

(MAIN GYM) Back parking lot road along the south side of the school from the bus lane. South doors facing the track and field parking lot.

Emergency Situations:

Emergencies include when an athlete is not breathing, has lost consciousness, and/or may have a serious neck, back, head injury, an open fracture/significant deformity, severe bleeding etc.

Non Emergencies include minor injuries such as small cuts, bruises, sprains, strains etc.

Emergency Protocol:

Call 911

Perform emergency first aid as needed

Contact LTCHS staff, as they are best suited to help with ambulance access, and extra first aid supplies.

Have someone meet and guide the ambulance

Non-Emergency Protocol:

First aid kits and ice are located in each gym

Perform first aid as needed

Contact LTCHS staff if help is needed.

PLEASE ENSURE THAT LTCHS STAFF ARE NOTIFIED OF ANY EMERGENCY.

LIFE THREATENING = 911

Non-Life Threatening = on-site Lindsay Thurber staff

EMS DISPATCH #:

Location of Phone and/or

Cellular Phone #:

Emergency Equipment Available:

Personal cell phones

Ice & bags, splints, wound care, basic first aid supplies available in each gym. Ice machine is located in the Outdoor Equipment room outside the south entrance doors to the Main Gym.

AED1 located at front of school near office

AED2 located near the Main Gym outside the LT Hallway doors

Obstacles That May Interfere:

Parked Cars, Spectators, Athletes, bleachers

Location of Nearest Emergency Facility:

Red Deer Regional Hospital Centre

3942 50a Ave Red Deer, AB T4N 4E7

(403)-343-4422

Location of Nearest Medicentres:

Waskasoo Medical Clinic

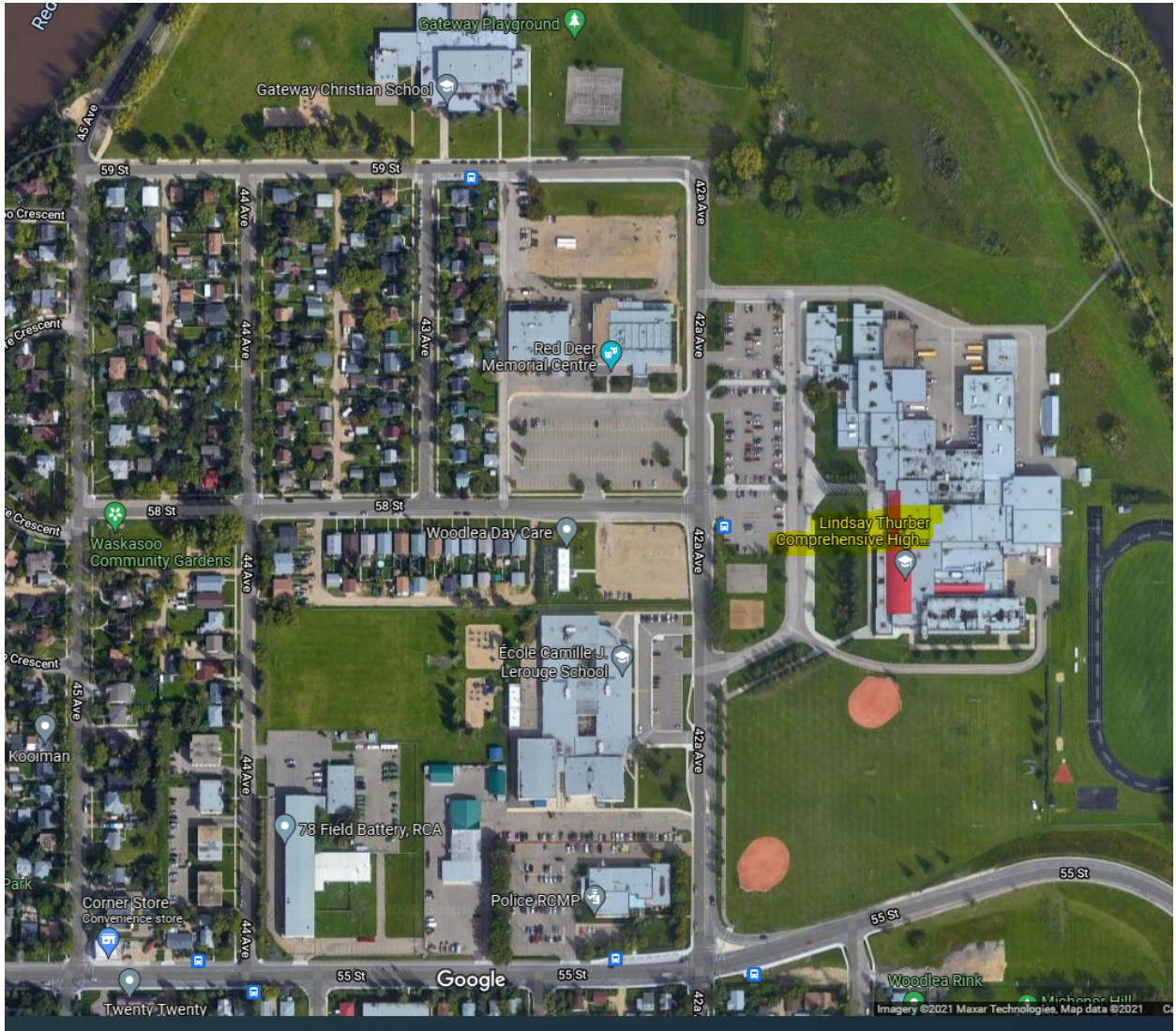
4750 48 Ave, Red Deer, AB T4N 3T1 - (403)-346-2057

Discovery Walk-In & Medical Clinic

Gaetz, 3410 50 Ave #130, Red Deer, AB T4N 3Y4 – (403)-342-9444

Village Mall Walk In Clinic

6320 50 Ave #22, Red Deer, AB T4N 4R1 – (403)-314-5357



PROCEDURE:

Everyone exits the building via designated route for your area OR closest exit.

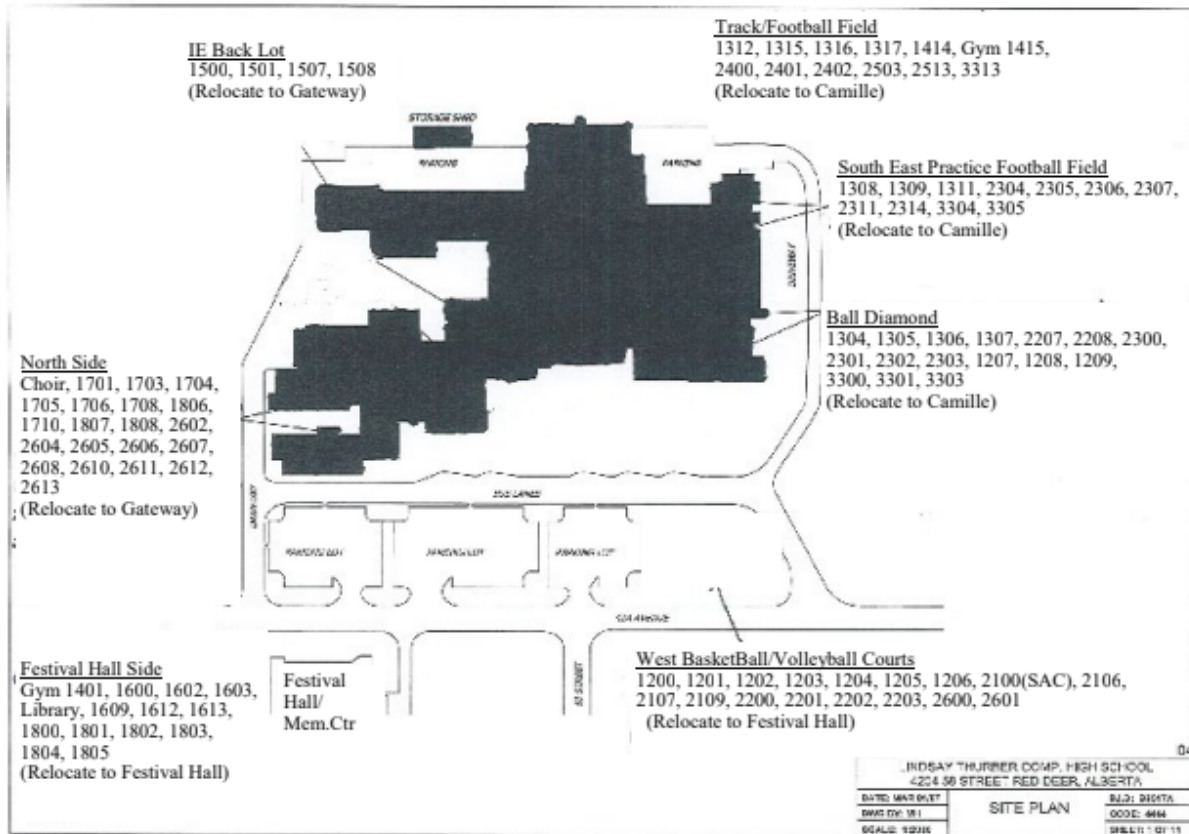
Wait at muster points until an "All Clear" signal is given or further directions communicated from area

Supervisor(s)

-In case of inclement weather, announcement will be made by administration or by Supervisor(s) to proceed to **Alternate Emergency Location.

-Once outside, form an organized line or group behind Supervisor(s) and take attendance.

-Wait outside until the ALL CLEAR message is heard or other instructions are given.



**ECOLE SECONDAIRE
LINDSAY THURBER
COMPREHENSIVE HIGH SCHOOL**

