



Alberta Schools' Athletic Association Provincial Badminton Championships

Date: May 6,7, 2022

Host: South Alberta Schools Athletic Association (SASAA)
Medicine Hat, AB

Venues:

Crescent Height High School (1201 Division Ave N)
Medicine Hat High School (200 – 7th St SW)
South Ridge YMCA/Notre Dame Academy (644 Spruce Way SE)

1. ORGANIZING COMMITTEE

South Alberta Schools Athletic Association (SASAA)

Marg Derbyshire, South Zone Secretary
1063 – 17th St NE Medicine Hat, AB T1C 1L1
(cell) 403-548-1784

Committee Members	Name	Telephone	Email
Crescent Heights High	Samantha Thorvaldson	204-485-4774	samantha.thorvaldson@sd76.ab.ca
Eagle Butte High	Sheldon Wihnan	403-952-5047	sheldonwihnan@prrd8.ca
Medicine Hat High	Scott Howes Chad Watson	403-502-2842 403-977-1904	scott.howes@sd76.ab.ca chad.watson@sd76.ab.ca
Monsignor McCoy High	Emma Johnston	867-446-0955	emma.johnston@mhcbce.ab.ca
ASAA Representative	Shelbea MacLennan	780-427-8182 (bus)	shelbea@asaa.ca
ASAA Commissioner	Kevin MacAlpine	780-238-6752	Kevin.MacAlpine@epsb.ca
Grievance Chair	Kevin MacAlpine	780-238-6752	Kevin.MacAlpine@epsb.ca
Sportsmanship	Leslie Waldbauer	403-979-2205	lesliewaldbauer@prrd8.ca
Sportsmanship	Barry Smith	403-504-3467	barrysmith@prrd.ab.ca

2. SCHEDULE OF EVENTS

Venues

Crescent Heights High School:	1201 Division Ave N	Phone (403) 527-6641
Entrance to Crescent Heights gym is at the parking lot on the East side of the school		
Medicine Hat High School:	200 – 7 th St SW	Phone (403) 527-3371
Main entrance to the school		
South Ridge YMCA/Notre Dame Academy	644 Spruce Way SE	Phone (403) 528-1631
Access on Strachan Rd SE, use the Main entrance to the South Ridge YMCA		

Friday, May 6, 2022

10:30am – 11:30am	Registration	Medicine Hat High School –Foyer
11:30am – 12:30pm	Warm-up, all venues	
12:30pm – 6:00pm	Round Robin Play	
	<ul style="list-style-type: none">• Crescent Heights High School (all Junior categories, 10 courts)• South Ridge Y/Notre Dame Academy (all Intermediate categories, 12 courts)• Medicine Hat High School (all Senior categories, 12 courts)	

Saturday, May 7, 2022

8:30am – 9:00am	Warm-up	
9:00am – 12:30pm	Category A and Category B Play-offs, Quarter Finals and Semi Finals	
	<ul style="list-style-type: none">• Crescent Heights High School (all Junior categories)• South Ridge YMCA/Notre Dame Academy (all Intermediate categories)• Medicine Hat High School (all Senior categories)	
1:00pm – 3:00pm	Gold/Silver and Bronze Medal matches	Medicine Hat High School (ALL categories)
3:00pm – 3:30pm	Banner Presentations	Medicine Hat High School

Individual medal presentations will occur at Medicine Hat High following each final game.

Team Banners will be presented after the competition has been completed and all results have been tabulated.

3. ATHLETE AND COACH REGISTRATION INFORMATION – Responsibility of each Zone Secretary or designate

Entry Fee:

- **\$31.00 per player.** Fee includes Registration Fee and Loonie Fee (ASAA *Pay It Forward Scholarship* fund))
- **Only Coaches registered on SRS and listed on the Zone Entry Form will be given wrist bands, allowing them access to the playing area and Hospitality Room.**

Payment payable to:

- **South Alberta Schools Athletic Association (SASAA)**
- **Only one cheque per Zone** (Individual school cheques will not be accepted)

Registration Deadline:

- Noon, Monday, May 2nd, 2022 (or earlier if possible)
- **Entries will only be accepted from the Zone Secretary (or designate).**
- All entries must be submitted by email.
- Zone Secretaries will be emailed an Excel file with two components on separate sheets; one sheet is to register entries (**2022 Badminton Zone Entry Form**) and the other sheet is to calculate registration fees (**2022 Zone Fee Form**).
 - The Zone Secretary will submit their entries in the exact order as specified in the 2022 Badminton Zone Entry Form.
 - For each entry, you will need the athlete's surname, first name, school, the school's city, zone, class (1A, 2A, 3A, 4A), and Coaches' name(s).

- EMAIL the 2022 Badminton Zone Entry Form and Zone Fee Form to Marg Derbyshire (mderb@shaw.ca) with a copy sent to Shelbea at ASAA (info@asaa.ca) **by noon on Monday May 2nd, 2022.**
- The Zone Entry Form and Zone Fee Form should be printed and signed by the Zone Secretary and brought to Registration on Friday morning along with the Zone Entry Fee cheque.

NOTE: Changes to the Zone Team Registration may be made prior to the event by the Zone Secretary contacting Marg Derbyshire. Changes will be accepted on the first day of the event (prior to the start of the first game) if the Zone Secretary submits a completed Official Registration Change form (found at the end of this package), **but it is preferred that the changes happen prior to 10:30 am Thursday, May 5th, 2022.** If a change cannot be properly made, the spot in the draw will remain empty resulting in a forfeiture. Every effort should be made by the Zone to try and fill the spot.

ASAA POLICY: If the change is not made by the deadline stated above or an athlete fails to show, the offending athlete's school will be penalized an additional \$50 per no show to a maximum of \$250. The ASAA Executive will have the sole discretion to impose the penalty based on the rationale provided by the school for late withdrawal.

4. ATHLETE AND COACH CHECK-IN UPON ARRIVAL

- Check-In for Players and Coaches: This will take place on Friday, May 6th between 10:30a.m. and 11:30 a.m. at **Medicine Hat High School.**
- Each Zone will have a designated box, containing INDIVIDUAL PACKAGES FOR EACH SCHOOL. It is preferred that these packages are picked up by the school coach or supervisor. Packages include lanyards for ATHLETES and COACHES, which will serve as their identification and entry to all venues.
- Each school will receive Coaching passes depending on the number of coaches sent on the Zone Registration Form. This pass allows coaches into the competition area, and in the designated coaching areas. Coaching passes must always be visible while a coach is in the competition area or coaching areas.
- **It is each school's responsibility that their coaches are registered on the ASAA SRS for their respective schools.**
- **It is the responsibility of the Zone Head Coach to ensure that school coaches use these passes appropriately.**

5. COMPETITION AGE GROUPS

- Junior: Competitors must be under 16 years of age as of Sept. 1, 2021
- Intermediate: Competitors must be under 17 years of age as of Sept. 1, 2021
- Senior: Competitors must be 19 years of age or under as of Sept. 1, 2021

6. COACHES MEETING

Coaches Meeting:

- The Coaches Meeting will be held virtually by ZOOM on Tuesday, May 3rd, 7:00 PM
- ZOOM invitations will be sent to Zone Coaches identified on the Zone Registration Form. Zone coaches may forward the invitation to coaches within their Zone.
- This Meeting provides an opportunity for the Host committee to review and clarify all procedures that will take place during the two-day event.
- Sportsmanship Nomination Forms
- Jury of Appeals selection
- **COACHES ARE REMINDED THAT COACHING IS ONLY ALLOWED**
 - After the first game for ONE full minute.
 - After the second game for TWO full minutes.
 - During these times, neither the coach nor the athlete may leave the court.
 - **Coaching is NOT ALLOWED during the 2-minute warm-up prior to the start of the match, nor at the 1-minute interval after one side reaches 11 points .**

7. TOURNAMENT DRAW

The qualifying round robin will be seeded prior to the competition by the ASAA Badminton Commissioner, according to ASAA policy (Handbook, page 87).

2022 POOLS

POOL A	POOL B	POOL C	POOL D
EDM 1	EDM 2	CAL 1	CAL 2
SC 2	SC 1	CEN 2	CEN 1
NE 1	NE 2	SO 1	SO 2
NC 2	NC 1	NW 2	NW 1

Draw Times: See the attached schedules on the website and in the Information Packages when you register Friday morning, May 6th. Draws will also be posted at each venue and on tournament software (see Badminton Alberta website under tournaments) and on the ASAA Provincial Host Website.

- Crescent Heights (all Junior categories) – 10 courts
- South Ridge YMCA/Notre Dame Academy (all Intermediate categories) – 12 courts
- Medicine Hat High (all Senior categories and all Medal matches) – 12 courts

Matches will be called in numerical order at each venue and will be assigned to the next open court. Match numbers will be displayed by the scoring table or on the gymnasium score clock. There will be “on deck” chairs near the scoring tables for players to wait for their match. Competitors must check-in at the Scoring Table promptly after their match has been called. (see Competition Rules below)

There will be separate playoffs for Category A and Category B. The 1st and 2nd place finishers in each of the pools will go to Category A Playoffs. The 3rd and 4th place finishers in each of the pools will go to Category B Playoffs. There will be a Gold, Silver and Bronze medal for each category.

Playoff Draws Category A

We will ensure that all 4 quarterfinal matches have a 1st place team vs a 2nd place team. This will be generated by Badminton Alberta and the Tournament Software prior to Provincials, but will not be published until Friday night, after completion of the round robin.

Playoff Draws Category B

We will ensure that all 4 quarterfinal matches have a 3rd place team vs a 4th place team. This will be generated by Badminton Alberta and the Tournament Software prior to Provincials, but will not be published until Friday night, after completion of the round robin.

8. COMPETITION INFORMATION

COMPETITION RULES:

- The Zone Entry Form submitted by each Zone Secretary by noon, Monday May 2nd, 2022, is the official Zone Roster. Only names on that sheet will be considered to be eligible for the competition. The only person allowed to make a change in entry will be the designated Zone Coach.
- All matches in each event will have a designated match number. Matches will be played in numerical order as courts become available (refer to draw sheets posted at each venue).
- Players will be allowed no more than 5 minutes between matches except between the semi-final and final match. This break will be no more than 15 minutes.
- Please be prompt. When your match is called, check in with the venue coordinator immediately. If a competitor does not check in within 5 minutes, the match will be defaulted.

- **Warm-ups will be limited to no more than 2 minutes. Once athletes step onto the court, there will be no coaching during the 2-minute warm up.**
- Players will decide side or serve at the beginning of the match by lot. The winner of the previous game will serve first in the next game. Players will change sides at the end of each game and at 11 points in the third game. All games are to 21.
- **Players must referee their own games. The player's side on which the shuttle falls is responsible for making the call. If you do not see the shuttle land, then the point goes to the other player/team. There should be no reserves.** If difficulties arise, the venue coordinator must be notified immediately.
- The server is expected to call the score prior to each serve.
- **Players are allowed a 1 minute interval during each game once one side reaches 11 points. The athlete is not allowed to leave the court and there will be NO coaching allowed during this time.**
- **Coaching will only be allowed after the first game for 1 full minute and after the second game for two full minutes. During this time, neither the coach nor the athlete may leave the court.**
- At the conclusion of the match, each player must sign the score sheet. The winning side is then required to bring the score sheet to the scorer's table. Leave the shuttle at the court.
- All medals will be presented after the Final matches, followed by pictures of the gold medalists.

HOUSE RULES:

- Use all garbage and recycling bins provided
- Wear only indoor shoes on the courts
- Be a Good Sport
- Viewing at venues is restricted to bleacher areas at Crescent Heights and South Ridge YMCA/Notre Dame Academy and to chairs on the running track overlooking the gym at Medicine Hat High. Only accredited coaches will be allowed access to the gymnasium floors when their athletes are playing. Coaching is allowed only as described in the Competition Rules.

9. EQUIPMENT AND UNIFORM POLICY

GAME SHUTTLE:

- The official game shuttle will be the Yonex Mavis 300
- The game shuttles will be provided at all venues from Yonex

UNIFORMS:

- **Athletes must compete in a uniform that distinguishes their school or zone.** Uniforms contrary to this rule will be considered illegal. When playing doubles, the uniforms shall match. Clothing with offensive language or symbols will not be allowed. Shorts should be worn during play. No hats or dew rags shall be worn during competition or warm-up. **Venue coordinators will instruct player or players to change if not in compliance with dress code. If competitors are dressed inappropriately they will be asked to change into appropriate attire. This rule will be strictly enforced by the venue coordinators.

10. AWARD PRESENTATIONS AND PHOTOGRAPHS

SCHOOL TEAM AWARDS:

- 1A – Betty Peters Award
- 2A – Sheila Iversen Award
- 3A – Al McDougall Award
- 4A – Roy Gouchey Award

These awards are presented to the school with the greatest number of points in all fifteen (15) events. In the event of a tie between two or more schools when determining the team winners, the tie will be broken by the team that has accumulated the most gold medals. If there are still ties, the tie will be broken by the team that has accumulated the most silver medals. This will continue down the results if need be.

Schools/teams will be awarded points based on their overall finish at provincials. Refer to the point chart below.

Point Tally Chart:

Placing	Points
1 st (Category A Gold)	20
2 nd (Category A Silver)	15
3 rd (Category A Bronze)	10
4 th	8
5 th – 8 th	6
9 th (Category B Gold)	5
10 th (Category B Silver)	4
11 th (Category B Bronze)	3
12 th	2
13 th – 16 th	1

Awards:

- ASAA medals will be presented to the gold, silver and bronze recipients for both the Category A and B side of the draw.
- Presentation will take place immediately after each of the Final Matches for Gold/Silver and the completion of the Bronze Medal match.
- The top three (3) competitors are required to report to the awards presentation area.
- The school team awards will be presented after all the competitions have been completed and results have been calculated. All School Team awards and medal presentations will take place at Medicine Hat High School. Plaques will be presented to the Top 3 teams (1st, 2nd and 3rd place) in 1A, 2A, 3A and 4A.

Photography:

- All category winners will be photographed for the ASAA Yearbook and will receive their ASAA Championship T-shirt.
- All gold medal competitors will have their picture(s) taken immediately after the conclusion of their awards presentation. Pictures will be taken with the athlete(s) wearing the champion t-shirt and the medal(s) awarded by the ASAA. Photos will take place at the awards area.
- Team photos for 1A, 2A, 3A, and 4A school championships will be taken at the conclusion of the Awards presentation of the Top 3 teams (1st, 2nd and 3rd place) in each Division who receive a plaque.

11. PROVINCIAL SOUVENIR CLOTHING

ELITE Sportswear will be the company offering Provincial clothing. ELITE Sportswear items will be available for purchase through this link: [ASAA Team Apparel Flyer 2022](#). A sample of the items will be on display at the Registration Table, Medicine Hat High School.

12. SPORTSMANSHIP

There will be a Sportsmanship Committee at the tournament watching participants at all venues. The Host Committee will be awarding "Sportsmanship Pins". Our Sportsmanship Committee will be at all venues seeking outstanding fair play. More information will be available at the coaches meeting.

13. GRIEVANCES

Jury of Appeals:

A jury of appeals will consist of:

- One ASAA representative (Staff, Executive member or Commissioner)
- One Tournament Chair
- Three (3) Zone Head Coaches as selected randomly at the coaches meeting on Friday
- An alternate as chosen at the coaches meeting from the remaining zones. The alternate will be used if the involvement of an athlete or athletes, places the zone jury member in a conflict of interest.
- The ASAA Executive Director, who will act as secretary to the Jury of Appeal but does NOT have a vote

14. TECHNICAL INFORMATION

14.1 For ASAA policy regarding eligibility please refer to **Section IV – Eligibility**, pages 27-32 of the ASAA Policy Handbook.

14.2 For ASAA policy specific to behaviour and conduct at this event please refer to **Section II – Discipline and Misconduct**, pages 22-25 of the ASAA Policy Handbook.

14.3 For ASAA policy specific to Badminton please refer to **Section IX – Badminton**, pages 51-54 of the ASAA Policy Handbook.

14.4 Discipline and Misconduct:

Breaches of the ASAA Code of Ethics are treated seriously, and as a host, we are required to report any breaches to the ASAA office where action may occur. A portion of the ASAA Code of Ethics states “Any conduct including, but not limited to, ejections, fighting, drug, alcohol or cannabis use, that results in dishonour to the athlete, the team, the school or the ASAA during an ASAA provincial championship event will not be tolerated” (page 22).

15. FIRST AID

15.1 First Aid Services:

Each site will have basic First Aid available. Taping will not be provided and is the responsibility of the athlete/coach.

15.2 Emergency Situations:

911 will be called in all emergency situations. Please follow the Emergency Action Plan (EAP) attached.

15.3 Washroom Facilities:

- Washroom facilities are available at each venue.
- Changing on the court or within the gymnasium is not permitted. Please use change rooms provided.

16. SAFETY GUIDELINES

- No practicing in hallways or open areas.
- Please refrain from littering, smoking and horseplay at all venues.
- Please use recycle and garbage bins provided.
- Do not play with a racquet that is cracked or lacks a proper grip.
- Do not play with a shuttle that is broken or deformed.

- ASAA strongly recommends the use of protective eye wear for all athletes.
- Do not wear jewelry.
- Due to the high nature of stop and starting in badminton, ensure proper footwear is worn.
- Do not enter adjacent courts to retrieve or play a shuttle while play in that court is in progress.
- The front-court player should avoid facing their partner during rallies.
- When possible, wait for play to stop before walking behind or beside courts.
- When walking around courts, always be aware of where the active players are.
- All players, coaches and spectators are to act respectfully and responsibly at all times.

17. ADMISSION AND PARKING

ADMISSION:

ADMISSION FEES to each of the venues will be charged. Wrist bands are required for entry.

Admission is CASH only:

\$2.00 per day / \$3.00 for both days (if purchased on Friday)

Children under 10 – FREE

***Spectators are reminded to keep their Wrist Band on them at all times. Spectators without their Wrist Band will be charged the entry fee to access the facilities.**

PARKING:

Although limited, PARKING IS FREE

Please DO NOT park in designated Staff Parking areas on Friday, however you may park in the Visitor or Student parking areas. You may park in any stall on Saturday. Street parking is allowed.

18. CONCESSION

There will be concessions available at all three venues.

19. CHAMPIONSHIP HOTELS

Hotels are the responsibility of teams to book and pay for. Hotels are on a first come basis for booking reserved rooms. These rates are for event participants only. Any rooms booked for non-athletes/teams are at regular hotel rates.

Schools: For an Exclusive Discount, quote code BADM05-22 when booking at these Medicine Hat Hotels for the Badminton Provincials May 6,7, 2022

StayInMedicineHat.com

Official Hotel Sponsors

For amenity details at each hotel, refer to the Accommodations section in the Championship Menu

HOME INN EXPRESS

- Address: 20 Strachan Crt. SEE
- Toll Free: 1-844-466-3642
- Phone: 403-527-1749
- Rates starting at \$89.00

COMFORT INN AND SUITES

- Address: 2317 TransCanada Way SE
- Toll Free: 1-800-4CHOICE
- Phone: 403-504-1700
- Rates starting at \$119.00

DAYS INN MEDICINE HAT

- Address: 24 Strachan Crt SE
- Toll Free: 1-800-329-7466
- Phone: 403-580-3297
- Rates starting at \$119.00

HOLIDAY INN EXPRESS AND SUITES

- Address: 9 Strachan Bay SE
- Toll Free: 1-877-504-5151
- Phone: 403-504-5151
- Rates starting at \$139.00

CLARION POINTE

- Address: 1100 Redcliff Dr. SW
- Phone: 403-969-9596
- Rates starting at \$89.00

TOWNEPLACE SUITES

- Address: 7 Stober Bay
- Phone: 403-487-5131
- Rates starting at \$129.00

20. CITY OF MEDICINE HAT MAP

Intermediate Events

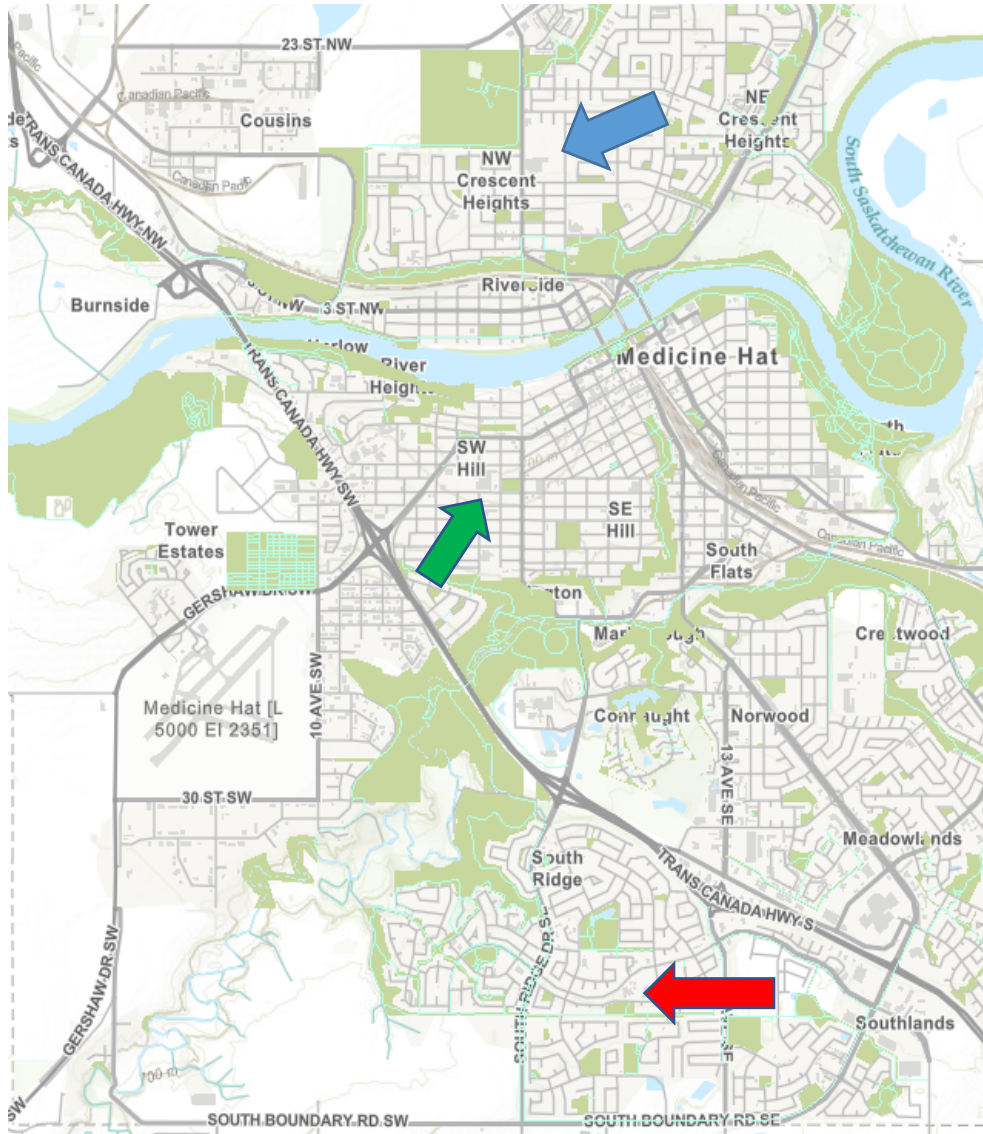
CRESCENT HEIGHTS HIGH
12 STREET & DIVISION AVE NE

Registration,
Senior Events, All Medal Matches

MEDICINE HAT HIGH
200 7 ST SW

Junior Events

SOUTHRIDGE Y/NOTRE DAME
644 SPRUCE WAY SE
ACCESS ON STRACHAN ROAD SE



21. EMERGENCY ACTION PLAN

**Emergency Action Plan - ASAA Provincial Badminton Championships
May 6-7, 2022**

Please follow and respect the policies and procedures of this Emergency Action Plan (EAP).

Emergency situations may arise at any time during athletic events. Expedient action must be taken in order to provide the best possible care to the athletes of emergency and/or life threatening conditions. If a serious injury occurs, time becomes critical. Subsequently, the implementation of this EAP must be adhered to when in an emergency situation. A copy of this EAP will be at each venue.

All sites for the provincials will have clear emergency exit signs posted in their gyms. The muster sites for all 3 gyms will also be indicated on the map.

Person in Charge:

- * Provincial Tournament Chair..... Marg Derbyshire 403-548-1784
- * Crescent Heights High School..... Samantha Thorvaldson _____
- * Medicine Hat High School Scott Howes 403-502-2842
- * South Ridge YMCA/Notre Dame Academy Curt Moll 403-878-5114

First person on scene of accident:

- * Assess injury status of a player (particularly head and/or spinal injuries).
- * If an ambulance and paramedics are required, the **Person in Charge** will call 911 if he/she deems it necessary and it has not been done yet.

Venue addresses for notification of Ambulance:

Crescent Heights High School

1201 Division Ave N, Medicine Hat, AB T1A 5Y8

Phone: 403-527-6641

- * remain in phone contact as instructed by 911 operator until paramedics arrive

Person in Charge

- * will take control of an emergency situation until a medical authority arrives.
- * will document the events of the accident and file a written report if necessary.

Medicine Hat High School

200 – 7th St SW, Medicine Hat, AB T1A 4K1

Phone: **403-527-3371**

* remain in phone contact as instructed by 911 operator until paramedics arrive

Person in Charge

* will take control of an emergency situation until a medical authority arrives.

* will document the events of the accident and file a written report if necessary.

South Ridge YMCA/Notre Dame Academy

644 Spruce Way SE, Medicine Hat, AB T1B 4X4

Phone: **403-528-1631**

* remain in phone contact as instructed by 911 operator until paramedics arrive

Person in Charge

* will take control of an emergency situation until a medical authority arrives.

* will document the events of the accident and file a written report if necessary.

Emergency Telephone Numbers and Addresses:

Medicine Hat Regional Hospital

Address: 666 5 St SW, Medicine Hat, AB T1A 4H6

Phone: **403-529-8000**

Contacting Medical Services (911):

Person in Charge

* the Administrator or Teacher supervisor is responsible for making the 911 telephone call.

* will take control of an emergency situation until a medical authority arrives.

* will document the events of the accident and file a written report if necessary.

* Teacher supervisors and Teacher at score table are required to have a cell phone on their person while attending an athletic event while at Bishop McNally, Nelson Mandela or ClearOne.

* Person in charge will stay in constant communication with the medical provider

* Person in Charge will contact Tournament Chair.

* Tournament Chair is responsible for having his/her cell phone number available to the Person in Charge.

* Tournament Chair will assist the **Person in Charge** with the filing of Accident Report if requested.

Control Person:

* The Teacher supervisor and/or other Teachers at the score table are responsible for securing the area and controlling the crowd and other participants.

* After the area is secured and controlled, the Teacher supervisor will act as the guide for emergency

personnel outside of the building to ensure expedient access to the victim.

* Seek highly trained medical personnel in the building if the **Person in Charge** believes the injury is serious and cannot wait for emergency assistance to arrive.

Continuation of Play:

* In consultation with the **Person in Charge**, Tournament Chair (if necessary) and game Officials, the continuation of play will be determined.

OFFICIAL REGISTRATION CHANGE

Zone: _____

PRESENT REGISTRATION:

Name(s) _____ School _____

Name(s) _____ School _____

CHANGED TO:

Name Birthday D/M/Y School Instructional Minutes Year Entry Gr 10

Name Birthday D/M/Y School Instructional Minutes Year Entry Gr 10

This new player / team ranks number **1** or **2** in the Zone (please circle)

Zone Coach: _____
(Please Print Name)

(Signature)

Tournament Official: _____
(Please Print Name)

(Signature)

DEADLINE FOR REGISTRATION CHANGE is Thursday, MAY 5th BEFORE 10:30am.

Please note that all students must be registered through the ASAA on-line registration (SRS) by the April 15th deadline.