



2017

ASAA Provincial Rugby Championships

Hosted by:
Strathmore High School
June 9 & 10, 2017

Field Locations:

Strathmore High School
100 Brent Blvd
Strathmore, Alberta
[Google Map](#)

Chestermere High School
241078 Hwy 791 – Rocky View
just east of Chestermere Alberta
[Google Map](#)

Tournament Coordinators:

Jerry Flaws,
Strathmore High School
School Phone: 403-934-3135
Cell Phone: 403-901-9453
Email: jerry.flaws@ghsd75.ca

Brad Steele,
Strathmore High School
School Phone: 403-934-3135
Email: brad.steele@ghsd75.ca

Tim Popel
Strathmore Store Front
School Phone: 403-934-9479
Email: tim.popel@ghsd75.ca

Other Contacts:

ASAA Deputy Director:	Michael Steele Phone: 780-427-8182 Email: michael@asaa.ca
Boys Rugby Commissioner:	Greg Forsyth, Strathcona High School School Phone: 780-439-3957 Email: greg.forsyth@epsb.ca
Girls Rugby Commissioner:	Jerry Flaws, Strathmore High School School Phone: 403-934-3135 Email: jerry.flaws@ghsd75.ca
Web Site Master:	Jerry Flaws, Strathmore High School School Phone: 403-934-3135 Email: jerry.flaws@ghsd75.ca

Tournament at a Glance

Tuesday June 6th, 2017

- Registration Deadline 9:00am

Friday June 9th, 2017

- **8:00-8:30am Mandatory Coaches meeting – Learning Commons (Library)**

Friday June 9th, 2017

- 10:00 Tier 2 Girls Quarter final
- 11:00 Tier 2 Girls Quarter final
- 12:00 Tier 2 Boys Quarter final
- 1:00 Tier 2 Boys Quarter final
- 2:00 Tier 2 Girls Semi-Finals
- 3:00 Tier 2 Girls Semi-Finals
- **Team Pictures and Meals 3:00-7:30**
- 4:00 Tier 2 Boys Semi-Finals
- 5:00 Tier 2 Boys Semi-Finals

Saturday June 10th, 2017

- 10:00 Tier 2 Girls Final Games
- 11:30 Tier 2 Girls Final Games
- 1:00 Tier 1 Boys Final Games
- 2:30 Tier 1 Boys Final Games

***Note: There is an ASAA sanctioned fine of \$250.00 per team if a team does not sign in and attend the Pre-Tournament Coaches Meeting. (ASAA policy Handbook, P65 section F)**

Tournament Information

1. Team Registration:

- All team registrations must be completed online by **9:00 am Tuesday June 6th**
Registration website: <http://provincials.asaa.ca>
- Registration includes a team roster, a team photo (if possible), team logo, a description of your team, and your meal ticket order
- Use the link provided

2. Competition Entry Fee:

The tournament entrance fee is \$400.00 per team plus one meal ticket per athlete, coach and trainer. Meal tickets are also your pass to get through the gate. Meals are \$9.00 per meal. Cheques are made payable to:

Strathmore High School

All Tournament entry fees must be received before the team's first game. Entry fees can be directed to Jerry Flaws @ Strathmore High School, 100 Brent Boulevard Strathmore, AB T1P 1V2 or they can be dropped off at the coaches meeting.

(Forgotten Chq's no excuse. I will accept cash and you can worry about getting repaid. Bank machine on location)

3. Awards:

ASAA representatives and invited dignitaries will present medals and awards at the completion of the game. Team talks and other discussions can happen after the awards are handed out. **No Pictures will be taken at the Awards so all teams must have a team picture taken Friday Evening.**

4. Game Protocol:

- It is incumbent upon all coaches and participants to be aware of ASAA Rugby policy and World Rugby rule variations specific to this event. Player Eligibility (Page 37-49 ASAA Handbook) and ASAA rugby rule variations (Page 111-115 ASAA Handbook)
- Overtime - (Page 114-115 ASAA Handbook)

8. Coaches Information:

- **ALL coaches MUST attend a coaches meeting on Friday June 9th at 8: am** at Strathmore High School. Any concerns regarding the tournament or referee interpretations will be addressed at this time. Although various zones have their own league variations, IRB U-19 Laws will be played at the ASAA Rugby Provincial Championships.
- **All School teams must have a representative who has taken the ASAA policies course and every coach must have taken the concussion course.**
- Coaches are responsible for being well versed regarding this information package and any information posted on the ASAA & Tournament website before they arrive at the tournament. A tournament coordinator will be available throughout the tournament to answer any questions.
- Any last minute information will be presented at the coaches meeting.
- The draw will be posted on the website. The teams will be added once everything has been finalized. This may be the Wednesday or Thursday prior to the championship so please be patient; it will be posted once it is approved.
- Appeals and/or disciplinary meetings will be held as per needed. One of the tournament coordinators, ASAA Staff representative and the Rugby Commissioners. Neutral coaches may be asked to sit in also.

9. Uniform Policy:

- All athletes must be dressed in a proper Rugby Kit, including uniquely identifiable jersey, shorts and stocking colour that is uniform with that of their team. Only rugby shorts can be worn. No Athletic shorts or just spandex will be allowed.
- Athletes must compete in a uniform that represents the school they are playing and participating for. All uniforms **must be uniquely identifiable** to distinguish each athlete from on-field teammates. Unnumbered uniforms shall not be permitted. Uniforms must not contain logos of community rugby clubs, provincial representative teams, etc. The only exception to this would be for the uniforms provided as a spare set of uniforms in case of teams with conflicting colours, as provided by the host organizing committee. If there is a conflict in the uniform colours, **the team with the lower ranking will wear the spare uniforms or turn their own sublimated Jerseys inside out.**
- All substitutes **MUST** be easily identifiable on the side line (a bright coloured pinnie that is not the same colour as your uniform. Teams must bring their own.)

10. Competition Site Security and Coaching Zone:

- For each playing field, there will be one side of the field designated for players, coaches and management or training staff and one side for spectators. **Spectators are not allowed on the field they must remain on their side of the field.** Spectators may not view the

game from within the team areas, nor may coaches or players view the game from the designated spectator areas (at the very least, a decision has to be made for the duration of the match. If a coach wants to view the game from the spectator's side of the field they must do so for the entire duration of the match and may not enter the team area or communicate with the team until the game has concluded).

- Communication to coaches/players from outside the team area is prohibited (this includes cell phones, two-way radios, etc.). This type of team management strategy is outside the spirit of the game. Designated trainers are permitted on or around the field as the needs of the players warrant. Teams/coaches will have a designated area during the game. Coaches are not to leave this area.
- Team/Coaching area will be painted on fields. All coaches and players are to remain inside this area. Coaching area will be between the 10m line and the 22m line.
- Coaches are not allowed onto the field during play with exception of an injury. A coach may attend to an injured athlete in a support role to the on field medic. The coach can only communicate with the injured athlete to ascertain the extent of the injury and support the injured athlete. If any coaching occurs while on the field the referee can remove the coach from the game.
- Designated water personnel/carriers may provide water to the on-field players. The number of the carriers may not exceed three. These persons must not be dressed in uniform. **Coaching or managing personnel may not be designated as water carriers or tee carriers.**

11. Discipline and Misconduct

- Breaches of the ASAA Code of Ethics are treated seriously, and as host, we are required to report any breaches to the ASAA office where action may occur. A portion of the ASAA Code of Ethics states “Any conduct, including, but not limited to ejections, fighting and drugs and alcohol use, that results in dishonor to the athlete, the team, the school or the ASAA will not be tolerated” (pp 28-30). Any unsportsmanlike or violent behavior (e.g. fighting) that results in an ejection of an athlete or coach from play in an ASAA provincial championship competition shall result in a suspension from the remainder of the provincial tournament.
- **Discipline/Appeal Committee:** All ASAA provincial championship hosts will convene a discipline/appeal committee. The committee will have the authority to address issues of a serious nature that may occur before, during or after a provincial championship match, or to hear appeals of the automatic suspension resulting from an ejection. The committee may include, but not be limited to, the tournament chairperson, an official, ASAA rep and coaches not in conflict with the issue.

12. Protests & Disputes:

- Protests or disputes concerning results or conduct within the event must be made within 30 minutes of the results being posted or announced. The protest must be made to one of the Tournament Coordinators in writing. The Tournament Disciplinary Committee, comprised of the Tournament Directors, ASAA Staff Representative, Officials Coordinator and Rugby Commissioner, will deliberate and a decision will be rendered, where possible, before the next scheduled match of any team involved with or included in the protest. If there is a conflict of interest a suitable replacement will be used on the grievance committee.
- Any response to the decision will be heard immediately at which point the Discipline Committee may alter the decision. At this point the Committee's decision will stand (for the purposes of moving on with the competition and the resolution of the tournament) and any additional appeals must be filed with the ASAA Provincial Rugby Commissioners. Appeals will be documented and used constructively toward improved equity, sportsmanship and general fairness if and where these things may be found lacking.
- If a grievance has been placed, contact information must be given to the tournament coordinator or ASAA rep. Teams and coaches must stay at the facility.

13. Sportsmanship:

- There will be a Sportsmanship Committee at the tournament watching teams both on and off the field. The Sportsmanship Committee is also very aware of spectators and fans and will be recognizing sportsmanlike behaviors as well. Individuals and teams displaying sportsmanship will be recognized after their final match.

14. Tournament Balls:

- The official game ball will be an IRB approved size 5 ball provided by the ASAA.

15. Physiotherapy Services & Medical Emergency Protocol:

- An Emergency action plan will be in your coach's package as well as on the Provincial Website.
- Emergency Medical personnel will be on site. The paid personnel will be there for injury assessment and treatment (or treatment recommendations).
- The on field medic is only for immediate injuries that occur during the game.
- The AHS Medical Response System will be notified if emergency services are required as per the recommendations of on-field medical personnel.
- The on Field medic only, will call or designate the call person to activate the emergency medical response system.
- Coaches may enter the field of play to comfort athletes and ascertain the seriousness of the injury. If the coach attempts to coach their team or their injured player well on the field, the referee may eject them from the game. The coach is only allowed on the field to tend to the injured athlete.

16. Dressing Rooms and Washroom Facilities:

- Change rooms are available at Strathmore High School (one Boy and one Girl) but they will be shared with all teams and phys-ed classes on Friday and a basketball tournament all weekend.. No change rooms will be available at Chestermere High School the entire weekend.
- Portable bathrooms will be available at Strathmore High and Chestermere High School. The bathrooms inside Strathmore High will be available both days.
- There will be no access to Chestermere High School. (Field rental only)

17. Souvenir Apparel & Photography:

- Gimmicks will be on-site to customize souvenir apparel for athletes to purchase. Gimmicks will set up in the pit outside the gym at Strathmore High School.



18. Parking:

- **Strathmore High School Parking**
 - Parking is available on-site but is limited.
 - Team buses can park on the grass just north of the school. This parking lot will be used for buses only.
 - Spectator parking is available on the west side of Strathmore High School.
 - Parking will be limited to the North and west side of the Strathmore High School on Friday and Saturday.

- **Chestermere High School**
 - Friday and Saturday Bus Parking on the grass just East side of the school
 - Friday Spectator parking is limited until school is dismissed at 2:00
 - Please Car Pool
 - Limited parking adjacent to the field North of School
 - Saturday all parking lots are available.
- See Map below

19. Accommodations:

- See the accommodations link on the tournament website

20. Additional Site Information:

- **Strathmore High School**
 - Warm-up on the track or between the track and the in-goal. No warm-ups on the playing field.
 - Spectators are only allowed on the east side of the field.
- **Chestermere High School**
 - Warm-up on the field just north of the game field at Chestermere High School
 - Spectators are only allowed on the east side of the field.
 - No running water available on site
 - Only porta potties for bathroom use.
 - If ball goes over the fence another ball will be brought into play from the score table.
- Please keep both facilities clean. Teams are asked to clean-up the sideline areas during and after their games. After team talks please make sure the area is clean. There have been problems in the past with teams leaving their tape and garbage in the grass. Please respect the facility!!
- If you are using bug spray, spray it outside of the playing enclosure and preferably on a non-grassy area. It kills the grass.
- No dogs are allowed on-site during the tournament.

21. Food and Concessions

- Athlete & Coach meals will be available at the Strathmore High School cafeteria between 3-7pm on Friday only

- Spectator meals can be purchased at the cafeteria from 11-12 and 1-7 on Friday only.
- Gimmicks will be available in the pit at Strathmore High School

22. Admission

- \$10.00/person– Children under 12 are Free
 - There are no tournament Passes Available
 - Athletes and team personal will need their participant pass to gain access to the field
 - Any team personal without a pass will be charged admission.

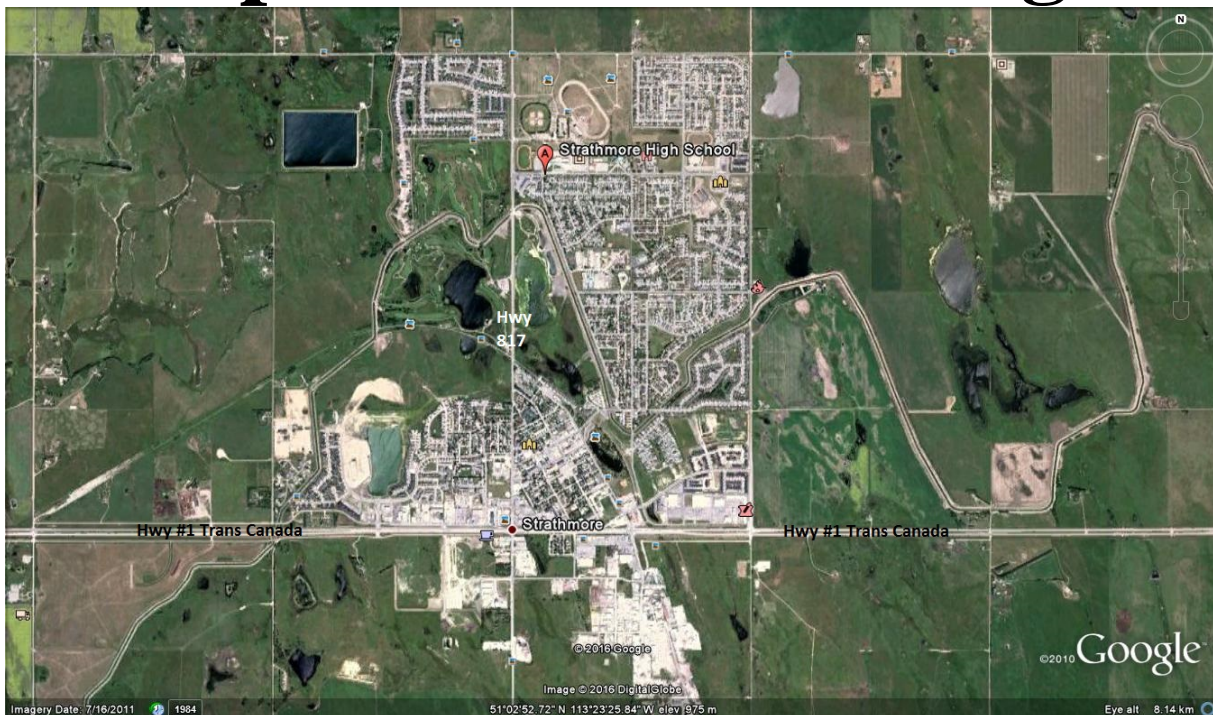
23. ASAA Lighting Policy

- The guidelines noted on the Safety Guidelines for Secondary Interschool Athletics will be followed. If in doubt, follow the 30-30 rule:
- 30 seconds: Count the seconds between seeing lightning and hearing thunder. If this time is less than 30 seconds, lightning is still a potential threat. Seek shelter immediately. Shelter will be available inside both schools if necessary.
- 30 minutes: After the last lightning flash, wait 30 minutes before leaving shelter. Half of all lightning deaths occur after a storm passes. Stay in a safe area until you are sure the threat has passed.

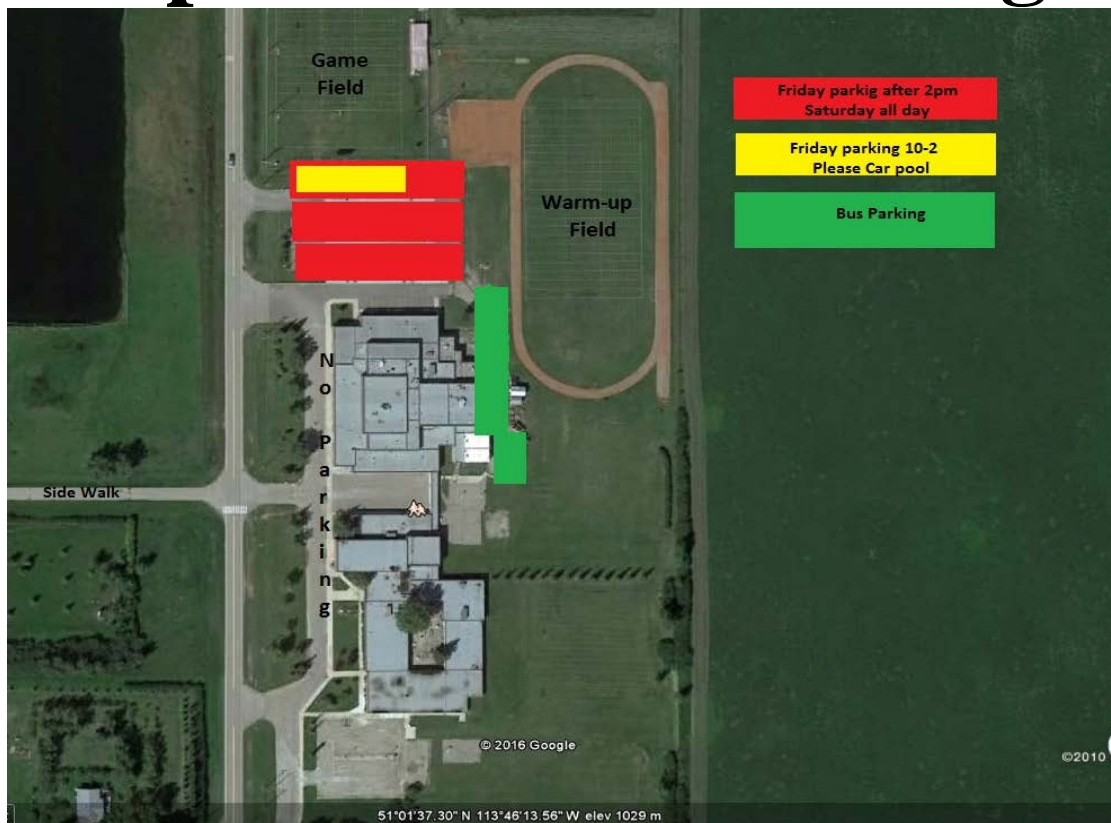
Map of Strathmore High



Map to Strathmore High



Map of Chestermere High



Map to Chestermere High

